

# **Developing Co-operative Councils: Building Co-operative Places**



People-centred councils  
driving social innovation  
putting people first

@CoopInnovation  
#ccin2019

# Councillor Sharon Taylor OBE

---

Leader, Stevenage Borough Council & Chair  
of CCIN

 @SharonStevenage



People-centred councils  
driving social innovation  
putting people first

@CoopInnovation  
#ccin2019



# Mayor Billy Sheerin

---

Rochdale Borough Council



People-centred councils  
driving social innovation  
putting people first

@CoopInnovation  
#ccin2019







# Lord Roy Kennedy

---

Shadow Spokesperson, Communities, Local  
Government & Housing

 @LordRoyKennedy



People-centred councils  
driving social innovation  
putting people first

@CoopInnovation  
#ccin2019

# Plenary 1

## Developing Co-operative Councils

Councillor Iain Malcolm - Chair

Councillor Matthew Brown

Councillor Sharon Taylor OBE

Councillor Peter Bradbury



People-centred councils  
driving social innovation  
putting people first

@CoopInnovation  
#ccin2019





South Tyneside Council



Co-operative Councils

Innovation Network

# Councillor Nancy Maxwell

---

Lead Member for Voluntary Sector,  
Partnerships and Cooperatives

South Tyneside Council

 @STyne\_Council



People-centred councils  
driving social innovation  
putting people first

@CoopInnovation

#ccin2019





# Councillor Matthew Brown

---

Leader, Preston City Council

 [@MatthewBrownLab](https://twitter.com/@MatthewBrownLab)



People-centred councils  
driving social innovation  
putting people first

@CoopInnovation  
#ccin2019

# Co-operation the Stevenage Way

**Cllr Sharon Taylor OBE**

Leader – Stevenage Borough Council

Chair – CCIN

[@SharonStevenage](#)

**2<sup>nd</sup> October 2019**



# Britain's First New Town





# A Pioneering Spirit

- A vision of what society could look like.
- Pioneers built the new town on the principles of mutual help and co-operation.
- Community infrastructure needed to be built and developed.





# Co-operation through adversity

- 1980s cold war/recession – significant job losses.
- The council, trade unions, local voluntary organisations came together.
- The Business Technology Centre was built and run by a social enterprise.



# Neighbourhood Planning

- The “Teddy Bear’s Picnic in Hampson Park”
- The power of communities coming together to solve challenges and design solutions
- Has created one of our most successful and sustainable community centres.





# Co-operative Neighbourhood Management

- A different way of working for the council.
- Neighbourhood based staff working with local residents and councillors delivering better services.
- Communities playing an active role and adding to the richness of the town.

## Our neighbourhood



# Community Wealth Building

- Co-operative solutions are all round us.
- The development of our approach to community wealth building.
- Working closely with Hertfordshire Growth Board and the University.

**Stevenage**  
BOROUGH COUNCIL

**University of Hertfordshire** **UH**  
Hertfordshire  
Business School

**Hertfordshire**  
Local Enterprise Partnership  
Perfectly placed  
for business









# Councillor Peter Bradbury

---

Cabinet Member for Leisure and Culture,  
Cardiff Council

 [@PEBradbury](https://twitter.com/PEBradbury)



People-centred councils  
driving social innovation  
putting people first

[@CoopInnovation](https://twitter.com/CoopInnovation)  
[#ccin2019](https://twitter.com/ccin2019)



**Co-operative Councils**  
Innovation Network

# Break



People-centred councils  
driving social innovation  
putting people first

@CoopInnovation  
#ccin2019

# Feedback from 2019 Policy Labs



People-centred councils  
driving social innovation  
putting people first

@CoopInnovation  
#ccin2019





# Jonathan Downs

---

Strategy, Partnerships and Policy Manager,  
(Corporate) Oldham Council

 @OldhamCouncil



People-centred councils  
driving social innovation  
putting people first

@CoopInnovation  
#ccin2019

## CO-OPERATIVE APPROACHES TO SUSTAINABLE FOOD

### WHY?

- (i) **Enable action** – key role food can play as a vehicle for cooperative action and cooperative enterprise
- (ii) **Opportunity** – potential to expand and deepen understanding and awareness of co-operative approaches to sustainable food
- (iii) **Collective interest** – 8 CCIN members referred to 'food' activity; enterprise, poverty, health, growing, education (CCIN Annual Conference)

A strong partnership,  
working collaboratively



### OUR CO-DEVELOPED APPROACH

#### 1. Research and interactive workshops

UK – Working across the CCIN/SFC combined network (70+ areas) host interactive workshops (min.4)

This would cover important food themes e.g.; Food Poverty, Food Economy, Healthy Food etc

#### 2. Communications and engagement (videos)

– Produce a range of different tools and engaging products highlighting local activity (e.g. Plymouth CATERed programme, Oldham's Get Oldham Growing programme, Cardiff's focus on food poverty and healthy food, Greenwich Community Development Agency)

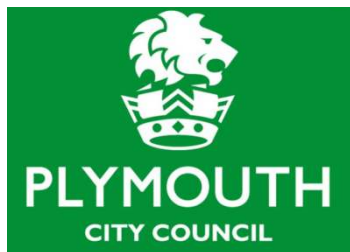
**3. Policy Tool** – Present findings and case studies in a single document as a policy tool to inform local, regional, national and international policy platforms

#### 4. Conferences & event presentations –

Presenting at two leading national conferences to cross-promote the findings to network members from 70+ local authority areas

### OUTCOMES

1. Detailed evidence of benefits and challenges of different food initiatives and suitability to local needs
2. Both CCIN and Sustainable Food Cities members (70+ combined) actively engaged in co-operative approaches to sustainable food priorities
3. Strengthen relationships between councils and cross-sector partners focussed on food issues
4. Inform and influence key inter/national policy drivers
5. Explore and encourage food partnerships within CCIN member areas to engage with food
6. Potential international collaboration and increased connections, benefits and relationships beyond the UK



# Anna Peachey

---

Economy Partnerships & Regeneration  
Manager, Plymouth City Council

 [@investplymouth](https://twitter.com/investplymouth)



People-centred councils  
driving social innovation  
putting people first

@CoopInnovation  
#ccin2019

# Co-operatives Unleashed: as seen from the grassroots

An enquiry into strategic Council participation in support of doubling the size of the co-operative economy before the end of the next parliament.



## The partnership:



Lead: Plymouth City Council

Critical Friend: Co-ops UK

Communications: through CCIN.

# Output and Outcomes:



## The outputs will be:

- a report and toolkit that outlines the process of instigating and delivering growth in the local co-operative economy – this will be made available on the CCIN website - and role of local government in co-operative development
- Launch planned for Spring 2020

## Outcomes will be:

- a better informed/resourced CCIN network
- a specialist CCIN network of Economic Development Officers
- a better understanding by national policy makers of the role local government can play in doubling the size of the co-operative economy

# Findings to date:



## Why

- Political Leadership
- The Business Case for applying Co-operative Values and Principles
- The Business Case for Council Intervention

## Who

- Members and Officers
- Knowledge, Skills and Experience

## How

- Mapping and Target Setting
- Resourcing – people and financial
- Process for creating a co-operative
- Technical Support used external to the Council



# Councillor Chris Penberthy

---

Plymouth City Council

 @ChrisPenberthy



People-centred councils  
driving social innovation  
putting people first

@CoopInnovation  
#ccin2019



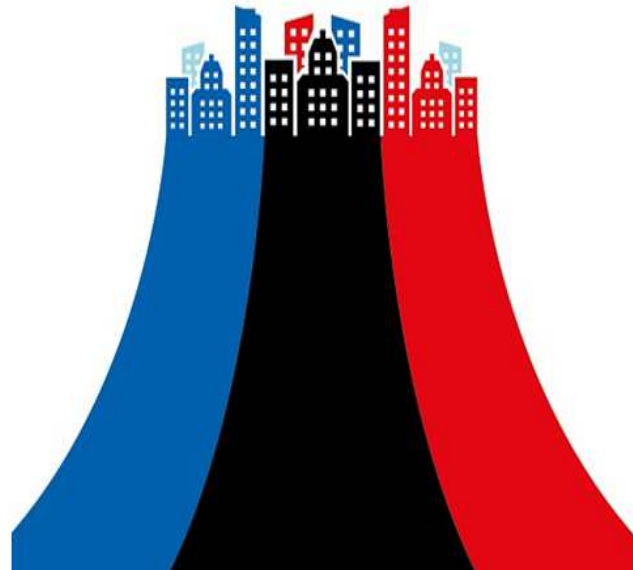
Cabinet Office



Nesta...

# CITIES OF SERVICE UK:

CAPTURING THE SKILLS AND ENERGY OF  
VOLUNTEERS TO ADDRESS CITY CHALLENGES





# Mayor Michael Bloomberg

- “When I became Mayor, I had a million volunteers in NYC doing a million different things”.
- “Imagine the difference they would make if they were directed to one or two things”
- “Imagine the biggest problems you have in your city and what you could do about them if you had the numbers needed to make the difference.”

## OUR CITIZEN ENGAGEMENT MODEL

City leaders can build more vibrant communities with support from their citizens.



# GROW SHARE COOK



- 159 Grow, Share, Cook volunteers
- Free fruit and veg delivered to the door for a year
- 1,400 beneficiaries to date (and counting)
- 42,000 meals (and counting)
- Now working with disadvantaged households and people on the cusp of, or recently diagnosed with Type 2 Diabetes
- 85% of beneficiaries report improved eating habits
- 86% report improvement in their general health.
- Social Return on Investment - £15.79 for every £1 spent (Rose Regeneration)

# CITIES OF SERVICE POLICY LAB - PLYMOUTH



- Mon 27/1/20 – Welcome Dinner.
- Tues 28/1/20 – Policy Lab/Conference.
- First 25 spaces free – including overnight stay, dinner and breakfast.  
Invites to be sent next week.
- Keynote speakers include Cities of Service representatives from the U.K and the U.S.
- Practical workshops on how Cities of Service could work for you.



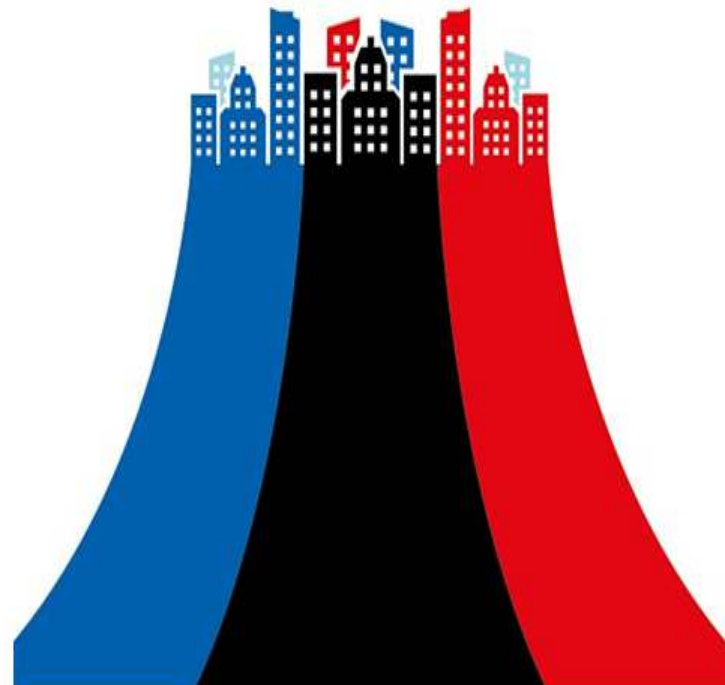
Cabinet Office



**CITIES OF  
SERVICE**  
UNITED KINGDOM

Nesta

THANK YOU





# Michael Curnow

---

Business Development Director, Peopletoo

 @Peopletoo1



People-centred councils  
driving social innovation  
putting people first

@CoopInnovation  
#ccin2019

# Steve Reed OBE MP

---

Honorary President of the CCIN & Shadow  
Minister (Digital, Culture, Media & Sport)

 [@SteveReed](https://twitter.com/SteveReed)



People-centred councils  
driving social innovation  
putting people first

[@CoopInnovation](https://twitter.com/CoopInnovation)  
[#ccin2019](https://twitter.com/ccin2019)

# Andrew Gwynne MP

---

Shadow Secretary of State, Communities &  
Local Government

 @GwynneMP



People-centred councils  
driving social innovation  
putting people first

@CoopInnovation  
#ccin2019



**Co-operative Councils**  
Innovation Network

# **CCIN Policy Labs**

## **Beyond Asset Transfer**



People-centred councils  
driving social innovation  
putting people first

@CoopInnovation  
#ccin2019

# Councillor Clare Penny-Evans

---

Newcastle City Council

 @cpennyevans



People-centred councils  
driving social innovation  
putting people first

@CoopInnovation  
#ccin2019



# Beyond Asset Transfer

Cllr. Clare Penny-Evans

Newcastle City Council



let's talk  
Newcastle

Newcastle  
City Council

# Introduction

- Drivers of asset transfer
- What we did and who was involved
- What we found
- Headline conclusions

# Asset transfer the drivers

- Public sector austerity
- Because it is the right thing to do - giving local people and community groups greater control in the future of their area and their community
- Sustaining neighbourhood assets and preserving citywide 'treasures' for future generations

# About the study: what we did and who was involved?

- Call out to CCIN members
- Responses from Nine council and nine community organisations and partners across England, Scotland and Wales
- Call for evidence focused on:
  - What went well
  - What was most important in successful transfer
  - What did not go well and strategies for overcoming barriers

# What works

- Interest from multiple groups
- Positive support from councillors, communities and the media
- Access to funding
- Established Governance
- Community support
- Asset transfer policy



# Barriers

- Capacity and time
- Emphasis on savings
- Knowledge exchange, experience and advice

# Conclusions

**Every transfer is different...but there are common themes**

**Successful examples of transfers share:**

- Excellent community support
- Local people with skills and expertise with time to get involved
- Good business model with sustainable source of income and opportunity to access charitable funding
- Enthusiasm for the process and a willingness to embrace the opportunities

**Shared areas of concern include:**

- Reduction in budgets for maintenance and repairs
- Retention of knowledge and expertise.
- Long term sustainability of transferred assets.
- Making sure that assets, post transfer continue to deliver social value

# Plenary 2

## Building Co-operative Places

Councillor Nick Crofts

Peter Pawson

Councillor Sue Woodward

Councillor Brenda Warrington

Tony Armstrong



People-centred councils  
driving social innovation  
putting people first

@CoopInnovation  
#ccin2019

# Councillor Nick Crofts

---

President of the Co-op Group Members'  
Council & Liverpool City Councillor

 [@CoopCrofts](https://twitter.com/CoopCrofts)



People-centred councils  
driving social innovation  
putting people first

[@CoopInnovation](https://twitter.com/CoopInnovation)  
[#ccin2019](https://twitter.com/ccin2019)



# Peter Pawson

---

Thriving Communities & Place Based  
Integration - Programme Manager, Oldham  
Council

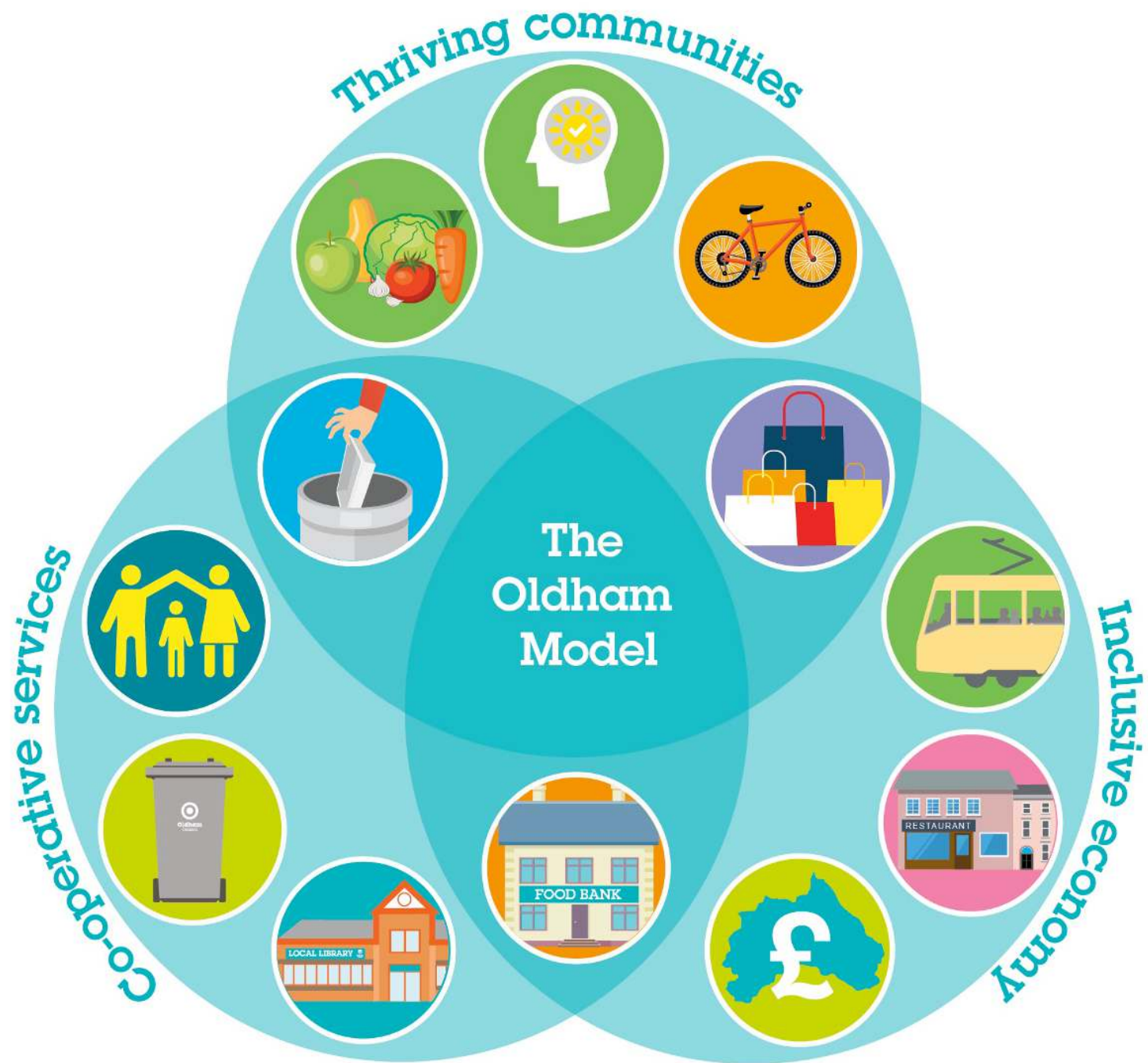
 @OldhamCouncil



People-centred councils  
driving social innovation  
putting people first

@CoopInnovation  
#ccin2019





# 5 key parts to our approach

1. Be data driven
2. Social value in everything we do
3. Getting to people earlier in the care pathway
4. Community support and development
5. Moving to a place based model

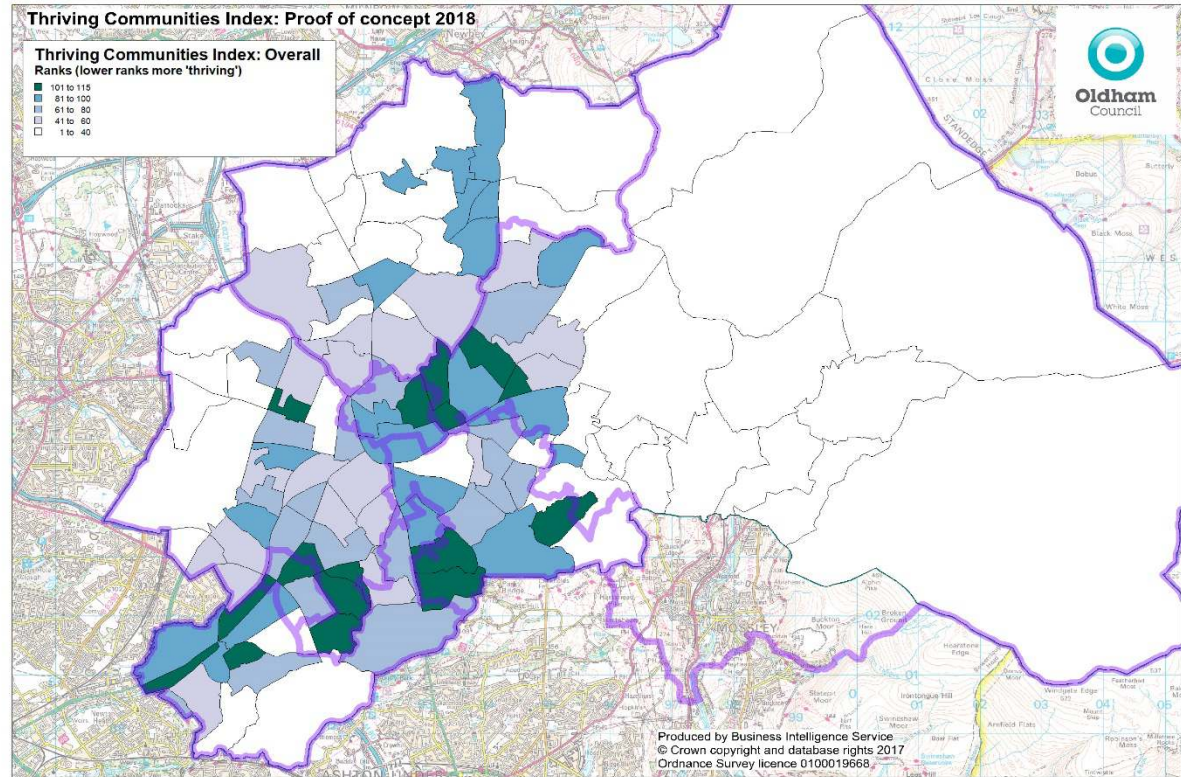
# 1: Be data driven: The Thriving Communities Index

Innovative new data product.

Combines 39 multi-agency indicators at a hyper-local level (c2000 pop)

Ranging from green space, diabetes to police call outs.

Spotlights where we focus our energy as a whole system.



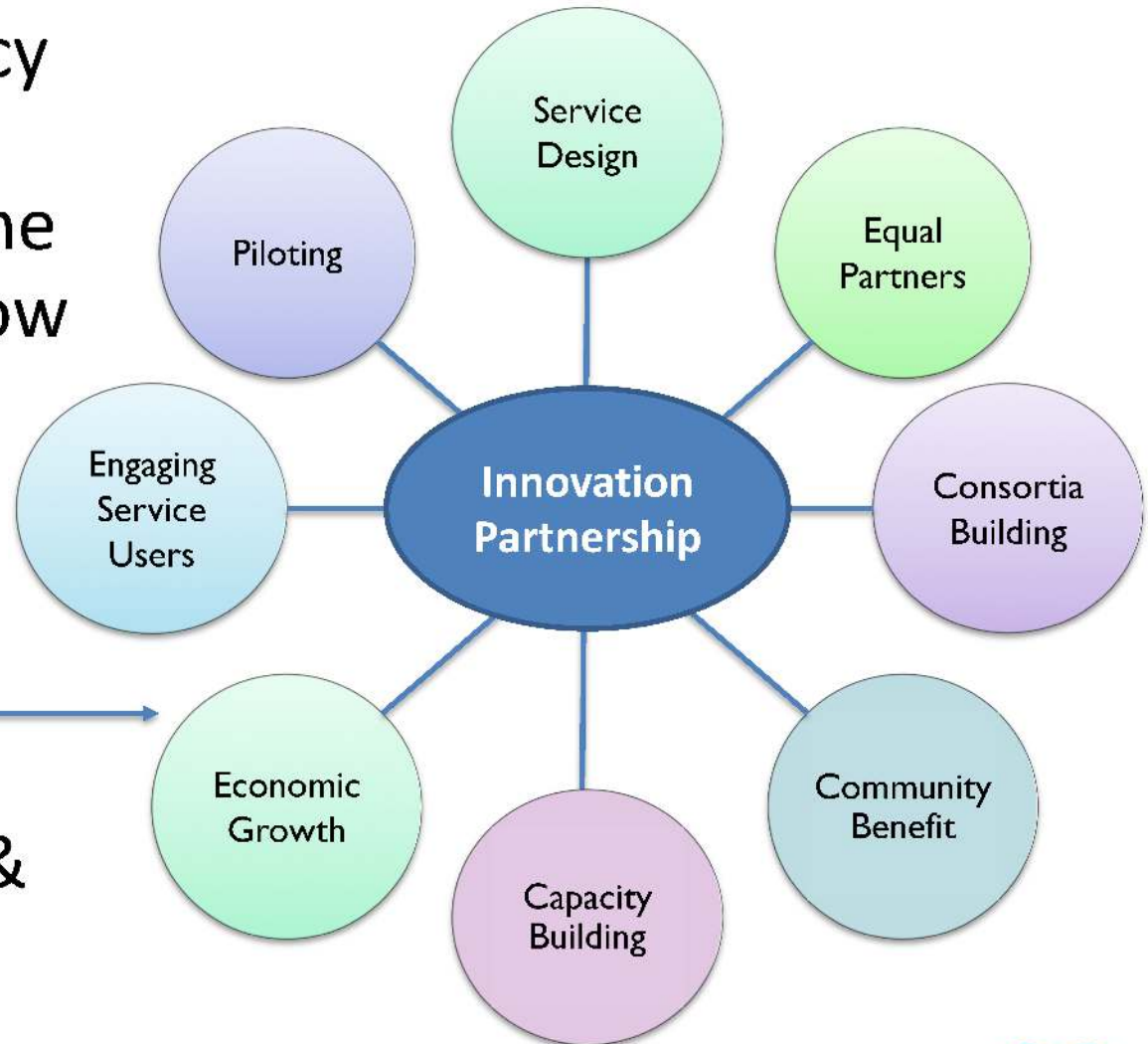
**Place**

**Resident**

**Reactive  
Demand**

## 2: Social value in everything we do

- Social value policy changing thresholds – some SV weightings now higher (15-20pc)
- Market engagement
- Innovation Partnership Commissioning & Procurement





# 3: Getting to people earlier in the care pathway

Live in Oldham West since February, with rollout to 4 other clusters in January 2019.

**Strength based approach**  
1,400 community groups/assets in the wider Social Prescribing network delivering 1.5m interventions p.a.

**Small sample size caveated, but seeing positive reductions;**

- Primary Care Appointments - 67%
- A&E attendances – 62% reduction
- Non elective bed days >90% reduction

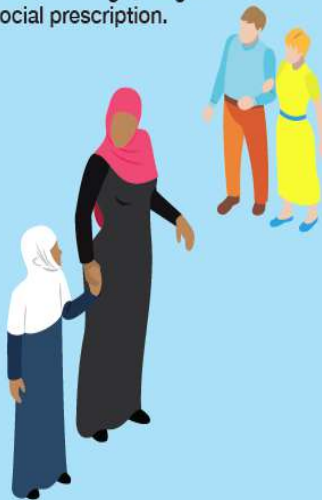
*Health and social care for Oldham*

## Oldham Social Prescribing

### Did you know?

Your doctor isn't the only person who can help you feel better.

You can improve your health and wellbeing through social prescription.



### What is Social Prescribing?

We know that taking care of your health involves more than just medicine.

With Oldham Social Prescribing you can get specialist support for more than medical issues.

Your local connector will contact you and spend time with you exploring what activities and/or local support could improve your health and wellbeing.

You can consider the benefits of participating in them, and we will assist and support you to plan your next steps.



### What support can I get?

Our connectors can help you with a range of issues, including:

- Social isolation
- Loneliness
- Emotional wellbeing
- Healthy lifestyle choices
- Getting out and about
- Life changing events such as birth, retirement, bereavement
- Long term health conditions
- Loss of confidence/purpose
- Poor health linked to housing or housing conditions
- Accessing work, training and volunteering





## 4: Community support & development

A poster for 'fast grants' with an orange background. It features a large lightbulb with a rainbow-colored filament and a large pound sterling symbol (£) at its base. The text is in white and yellow. Logos for 'Oldham cares' and 'action together' are in the top right and bottom left corners respectively.

**fast grants**

*Small amounts can have a big impact*

Are you a resident or community group with a great idea and need £50 – £500 to do something exciting in the place you live?

Well now you can! Thriving Communities has made money available for you to try something new, that will harness the talents and skills of local people living in your area, or even build on existing projects. Here are some examples:

- Do you want to improve your area?
- Do you need help to run an activity?
- Do you want to help your community to be fit and healthy?

To apply for a **Fast Grant** please complete the form at: [www.oldhamcares.com/fast-grants](http://www.oldhamcares.com/fast-grants) or email: [thriving.communities@oldhamcares.com](mailto:thriving.communities@oldhamcares.com)

A poster for the 'Social Action Fund' with an orange background and a hexagonal pattern. It features icons for a sun, a glass of water with an apple, a heart with a pulse line, a family, and a money bag. The text is in white. Logos for 'Oldham cares' and 'action together' are in the top right and bottom left corners respectively.

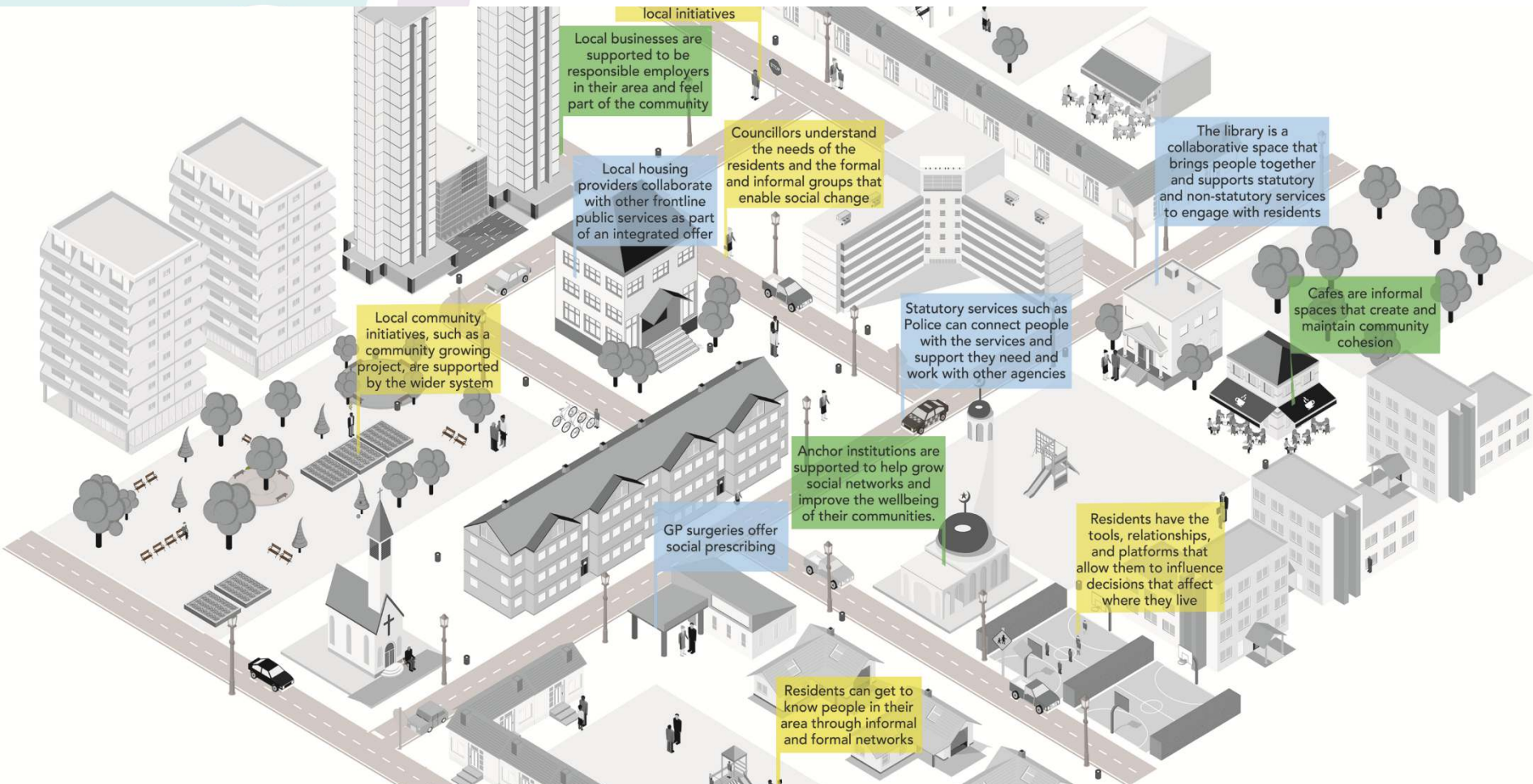
**Social Action Fund**

- **Funding for good ideas for grassroots** community groups to improve community, place, health and wellbeing £50-£500 per grant
- £60k per annum – >90 now awarded

- **Focusing on social isolation**, physical health and mental health £850k over 3yr. 5 VCFSE programmes initiated; Street Angels, Play Streets, BAME, physical activity and growing

- **Work ongoing with the Thriving Communities Hub** to look at how we can better coordinate public sector VCFSE funding (c£4.5m grant and £13m contract)
- Leverage in more from elsewhere – more joined up borough approach to big funders (c£85m)
- Building on Anchor institutions

# 5: Moving to a Place Based model



- Moving to a more unified public sector with all partners
- 4 small sites currently – now upscaling to the 30 – 55k neighbourhood footprints
- Co-terminus geography with health Primary Care Networks
- Putting residents, members and local need at the heart of the model



**Thanks for listening**

**[peter.pawson@unitypartnership.com](mailto:peter.pawson@unitypartnership.com)**



# Councillor Sue Woodward

---

Leader, Burntwood Town Council &  
Labour Group Leader, Staffordshire County Council

 @Sue\_Woodward



People-centred councils  
driving social innovation  
putting people first

@CoopInnovation  
#ccin2019

# Councillor Brenda Warrington

---

Leader, Tameside Council

 [@tmbc\\_leader](https://twitter.com/tmbc_leader)





# Tony Armstrong

---

Chief Executive, Locality

 @antlondon



People-centred councils  
driving social innovation  
putting people first

@CoopInnovation  
#ccin2019



# Launch of 2020 Policy Labs & Prototypes

Chris Penberthy

 @ChrisPenberthy

Councillor Dr Dave Jones

 @DaveMazzJones



People-centred councils  
driving social innovation  
putting people first

@CoopInnovation  
#ccin2019



# Health & Social Care – our funded projects for 2020

## Item 6

What are the co-operative solutions in health and social care – for example:

- Social care and school transport
- Childcare
- Extra care housing
- Domiciliary care
- Commissioning/procurement
- Beneficiary/user engagement
- Self-organising around personal budgets
- Community meals services
- Preventative healthcare



# Councillor Allen Brett

---

Leader of Rochdale Borough Council



People-centred councils  
driving social innovation  
putting people first

@CoopInnovation  
#ccin2019



# Councillor Sharon Taylor OBE

---

Leader, Stevenage Borough Council & Chair  
of CCIN

 @SharonStevenage



People-centred councils  
driving social innovation  
putting people first

@CoopInnovation  
#ccin2019